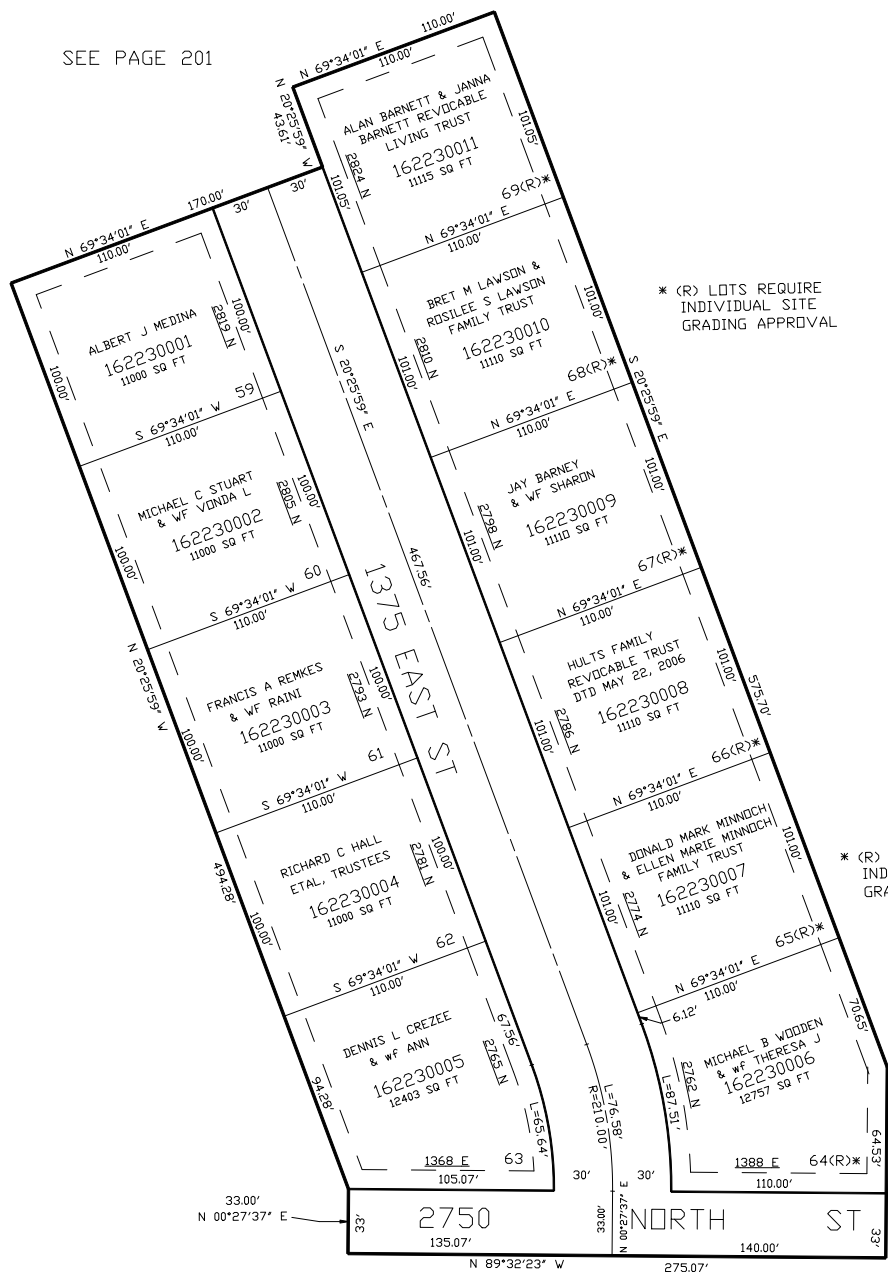


PART OF THE S.1/2, OF SECTION 27, T.7N., R.1W., S.L.B. & M.  
HALL TREE SUBDIVISION - PHASE II

IN NORTH OGDEN CITY  
SCALE 1" = 50'

TAXING UNIT: 10

SEE PAGE 201



\* (R) LOTS REQUIRE  
INDIVIDUAL SITE  
GRADING APPROVAL

SEE PAGE 49-3

\* (R) LOTS REQUIRE  
INDIVIDUAL SITE  
GRADING APPROVAL

SEE PAGE 49-3

10' UTILITY & DRAINAGE EASEMENTS EACH  
SIDE OF PROPERTY LINES AS INDICATED  
BY DASHED LINES EXCEPT AS OTHERWISE  
SHOWN.

FOR COMPLETE ENG DATA SEE  
ORIGINAL DEDICATION PLAT IN  
BOOK 49, PAGE 71 OF RECORDS.

SEE PAGE 49-3